

PART OF E 1/2 OF SEC. 27, T.5N., R.1W., S.L.B. & M.
MOUNTAIN VALLEY RANCHETTES
 PHASE 1 AMENDED PLAT

163

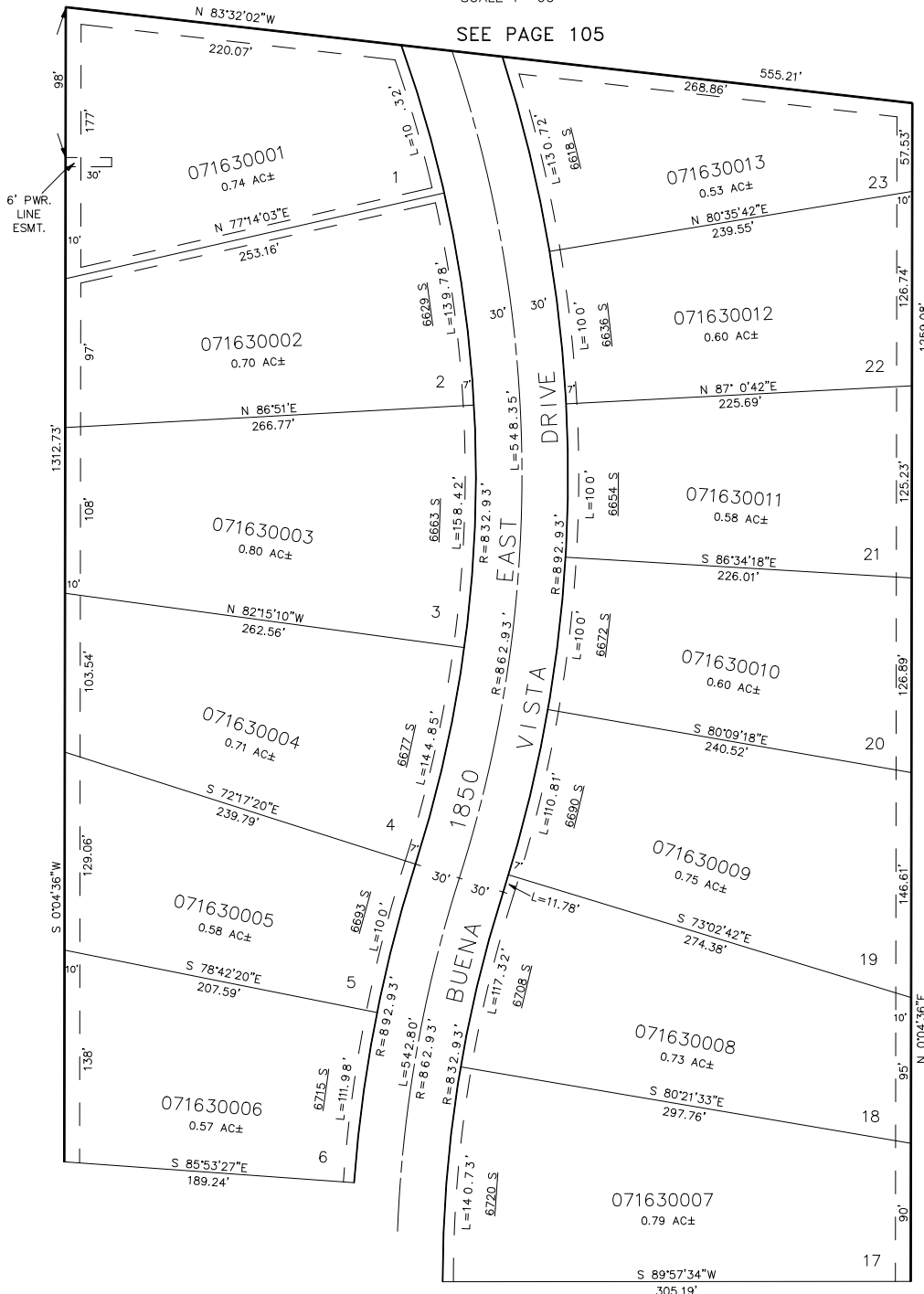
LOTS 1-6 & 17-23

TAXING UNIT: 55

IN TOWN OF UTAH

SCALE 1"=60'

SEE PAGE 105



SEE
PAGE
105

SEE PAGE
102

10' UTILITY & IRRIGATION EASEMENTS
 ALONG BACK OF ALL LOTS AND NORTH
 SIDE OF LOTS 1 & 23. 7' EASEMENTS
 ALONG FRONTAGE OF ALL LOTS. 4'
 EASEMENTS ALONG SOUTH SIDE OF LOTS
 11 & 12. ALSO, 10' ESMT. BETWEEN
 LOTS 1 & 2. 6' POWER LINE EASEMENT
 IN LOT 1

FOR COMPLETE ENG. DATA SEE
 ORIGINAL DEDICATION PLAT IN
 BOOK 18, PAGE 50 ALSO, AMENDED
 PLAT IN BOOK 19, PAGE 21 OF
 RECORDS.

SEE PAGE 164